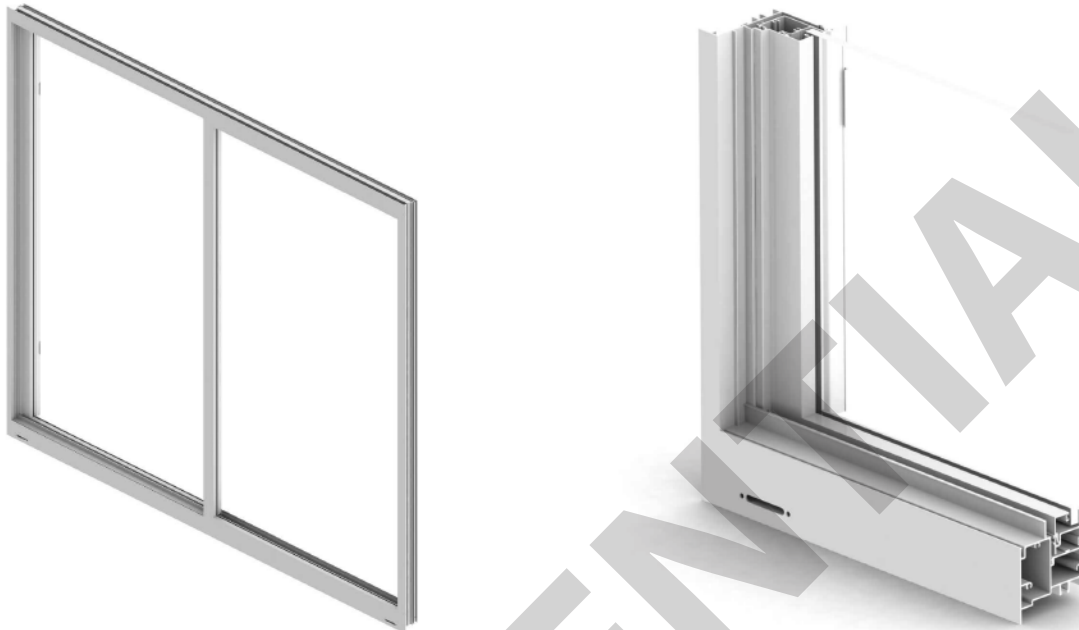


SLIDING WINDOW

www.eswindows.com

ES-EL200



System Description

- Large missile impact and small missile impact.
- Frame depth: 2 15/16".
- Front: 2 7/8".
- Frame sight line: 3 1/16".
- Sill height: 3 5/16".

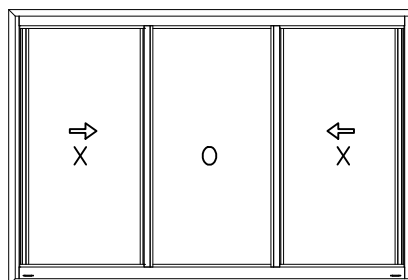
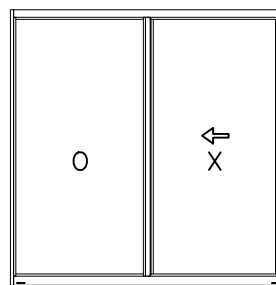
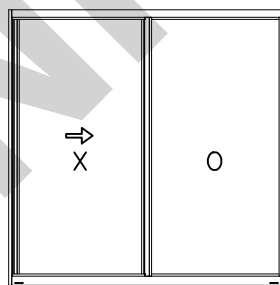
Features

- Flange frames, flange frames with flush adapter and flange frames with fin adapter.
- Mtg. stiles with or without reinforcing.
- With or without sill riser.
- Vent Latch SK08-4010 or sweep lock SL320.

Test

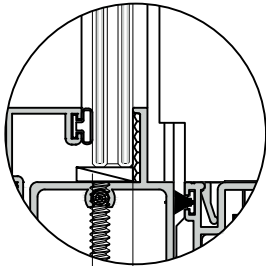
- Air infiltration: 6.24 psf
- Water infiltration: 9.75 psf or 12 psf (sill riser)
- Design load: +/- 65 psf or + 80/- 90 psf (reinforcing)

Configurations



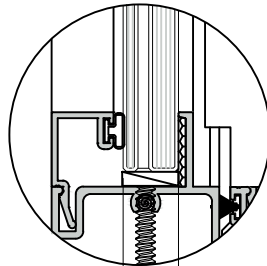
Glazing options

Laminated glass



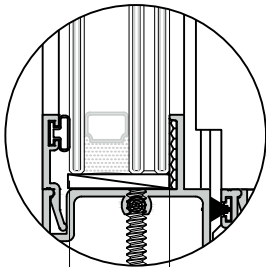
5/16"

Laminated glass



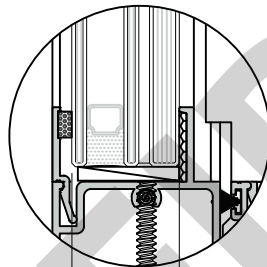
7/16"

Insulating laminated glass



13/16"

Insulating laminated glass



7/8"

Designed for 5/16" laminated glass

- 1/8" Heat Strean'd + 0.090 Interlayer + 1/8" Heat Strean'd.
- 1/8" Heat Strean'd + 0.075 Interlayer + 1/8" Heat Strean'd.

Designed for 7/16" laminated glass

- 1/8" Heat Strean'd + 0.090 Interlayer + 1/4" Heat Strean'd.
- 1/8" Heat Strean'd + 0.075 Interlayer + 1/4" Heat Strean'd.

Designed for 13/16" insulating laminated glass

- 1/8" Temp. Glass + 3/8" air spacer + 1/8" Heat Strean'd + 0.090 Interlayer + 1/8" Heat Strean'd.

Designed for 7/8" insulating laminated glass

- 1/8" Temp. Glass + 5/16" air spacer + 1/8" Heat Strean'd + 0.090 Interlayer + 1/4" Heat Strean'd.
- 1/8" Temp. Glass + 5/16" air spacer + 1/8" Heat Strean'd + 0.075 Interlayer + 1/4" Heat Strean'd.

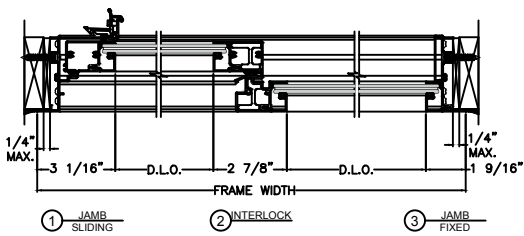
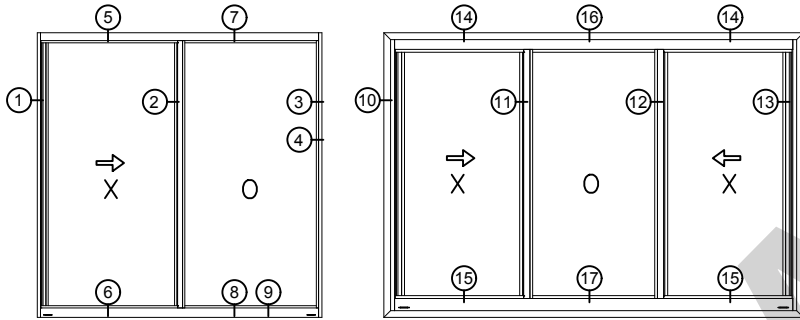
INTERLAYER TYPES FOR LAMINATED GLASS

1. 0.090 Sentryglass Plus (SGP)
2. 0.075 Vanceva Storm
3. 0.090 Saflex PVB
4. 0.090 Dupont PVB

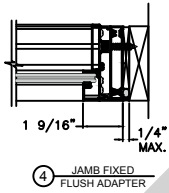
GLASS FINISH:

PAINTED, SERIGRAPHY, DIGITAL PRINTED

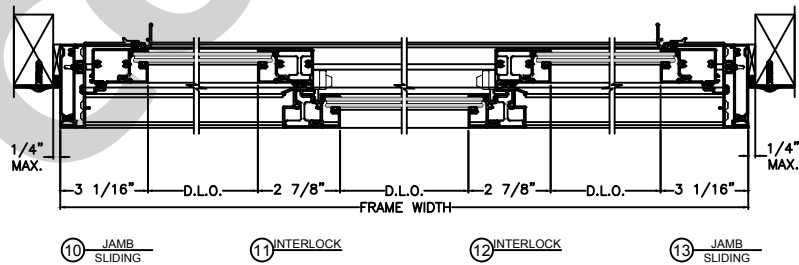
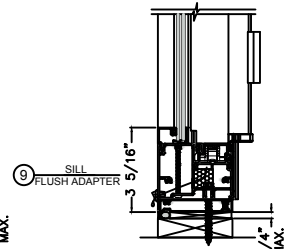
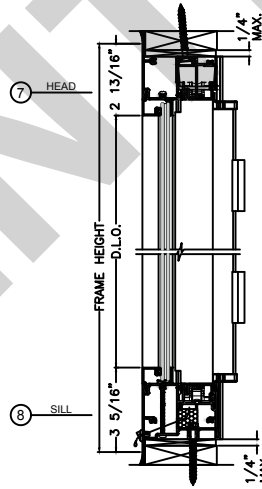
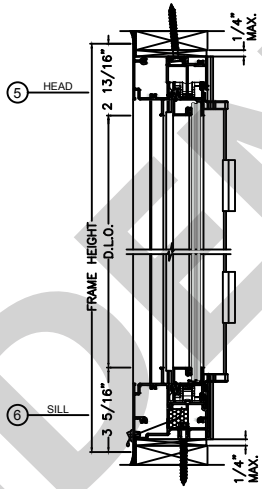
For more information please contact TECNOGLASS® or visit www.tecnoglass.com



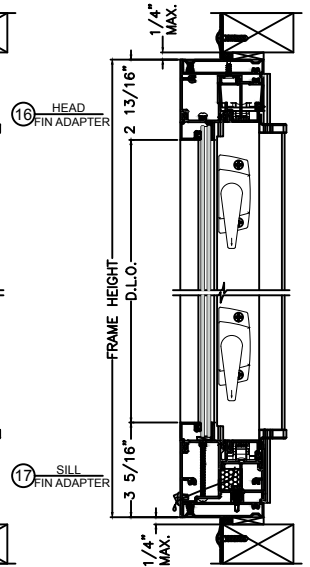
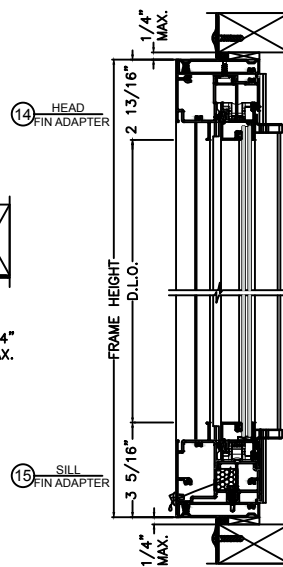
① JAMB SLIDING ② INTERLOCK ③ JAMB FIXED



④ JAMB FIXED FLUSH ADAPTER



⑩ JAMB SLIDING ⑪ INTERLOCK ⑫ INTERLOCK ⑬ JAMB SLIDING



Aluminum

ALLOY 6063-T6
ALLOY 6005-T5

For more information about aluminum and finishes consult ALUTIONS®.

Measurements

Maximum sizes:

FOR XO AND OX: 72 15/16" x 62" .
FOR XOX: 110" x 62" .

Sealant

APPROVED SILICONE SEALS:

WEATHERPROOFING SILICONE:

Used to seal profile unions to avoid air and water infiltration.

- Dowcorning 791 (Black-White)

STRUCTURAL SILICONE:

Besides acting as a sealant it is capable to support high loads. This silicone is commonly used to support the glass in facades and hurricane resistant products.

- Dowcorning 983
- Dowcorning 795